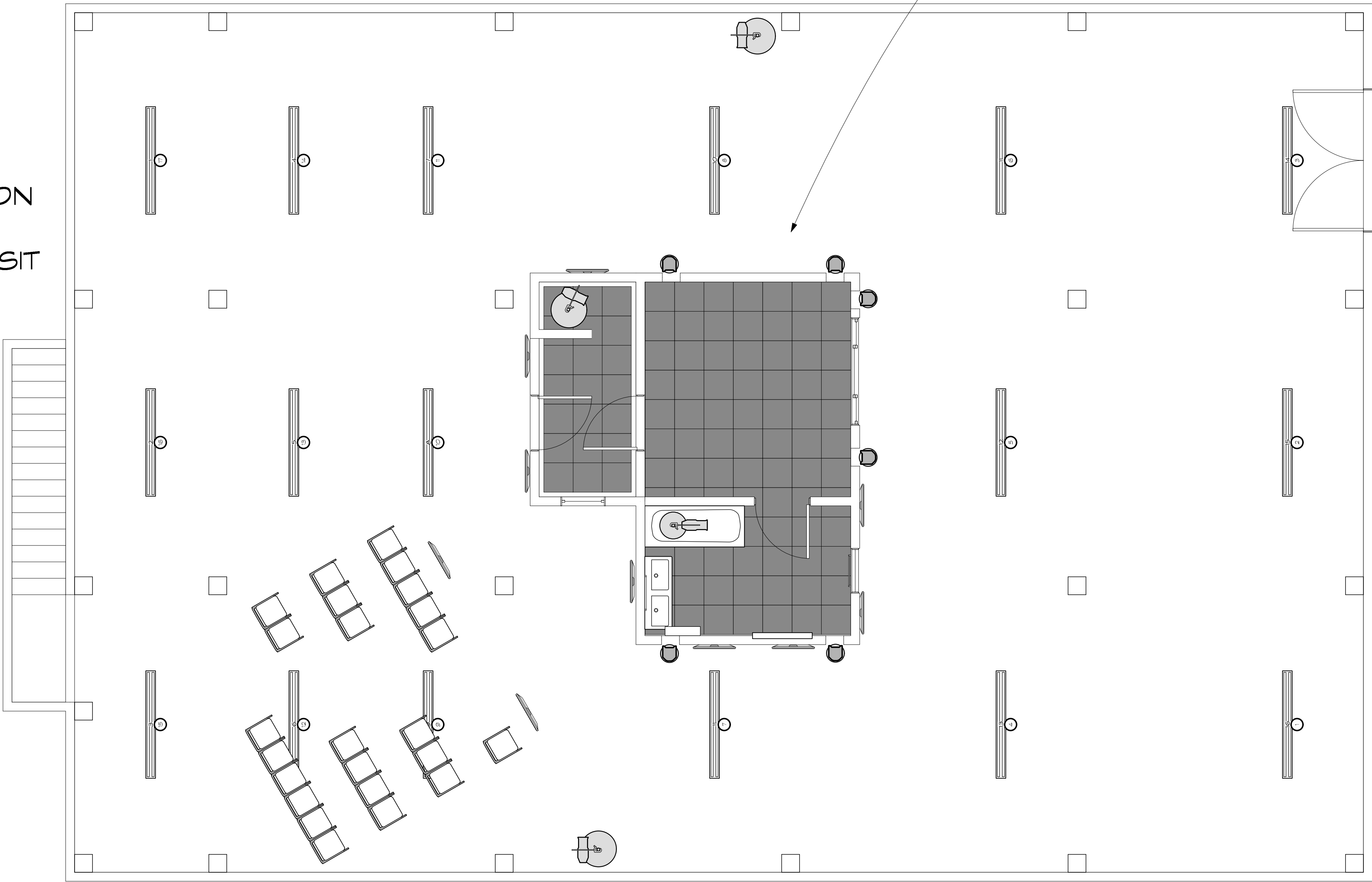


E

N

- AUDIENCE NOTES
- ALL FLOURESCENT TUBES WORK IN PRE-BLAST
  - HALF WORK POST-BLAST
  - AUDIENCE VIEWS FOOTAGE ON TV SCREENS
  - AUDIENCE CAN WANDER OR SIT IN VIDEO VILLAGE



- NOTES
- FLOOR OF SET IS MADE OF ROBE BLACK MARBLE FLOOR LED PANELS

ROE Visual's Red Dot award-winning Black Marble high-end floor panel brings creativity to your feet. Available with a high-contrast glass or matte or mirror finish, these floor panels are suited for a wide range of creative uses.



S



FLOURESCENT CASING EXAMPLE

Light

PRACTICAL

Sidearm 12'

D40 Vivid SEL30

D40 Vivid SEL60

D40 Vivid SEL75

ETC Source-4 19"

ETC Source 4 26"

ETC Source-4 36"

Etc Source 4 70"

6in Light bulb

USITT FL\_6\_2

Typical

Unit Number

Channel

1 PRE-BLAST AUDIENCE  
Scale: 1/4" = 1'-0"

W

N

NOTES:  
-PHILIPS HUE LAMPS  
N ALL PRACTICALS



VANITY LIGHTS  
-x5 BARE BULBS

FLOOR LAMP



CEILING LIGHTS  
-x1 IN HALLWAY  
-x4 IN BATHROOM  
-x9 IN BEDROOM

TABLE LAMPS  
-x2 ON NIGHTSTANDS



S



N

HALL BOOM

HALL WINDOW  
BOOM

BASE BOOM  
#6

SHOWER  
BOOM

BASE BOOM  
#1

BASE BOOM  
#5

BATH

BASE BOOM  
#2

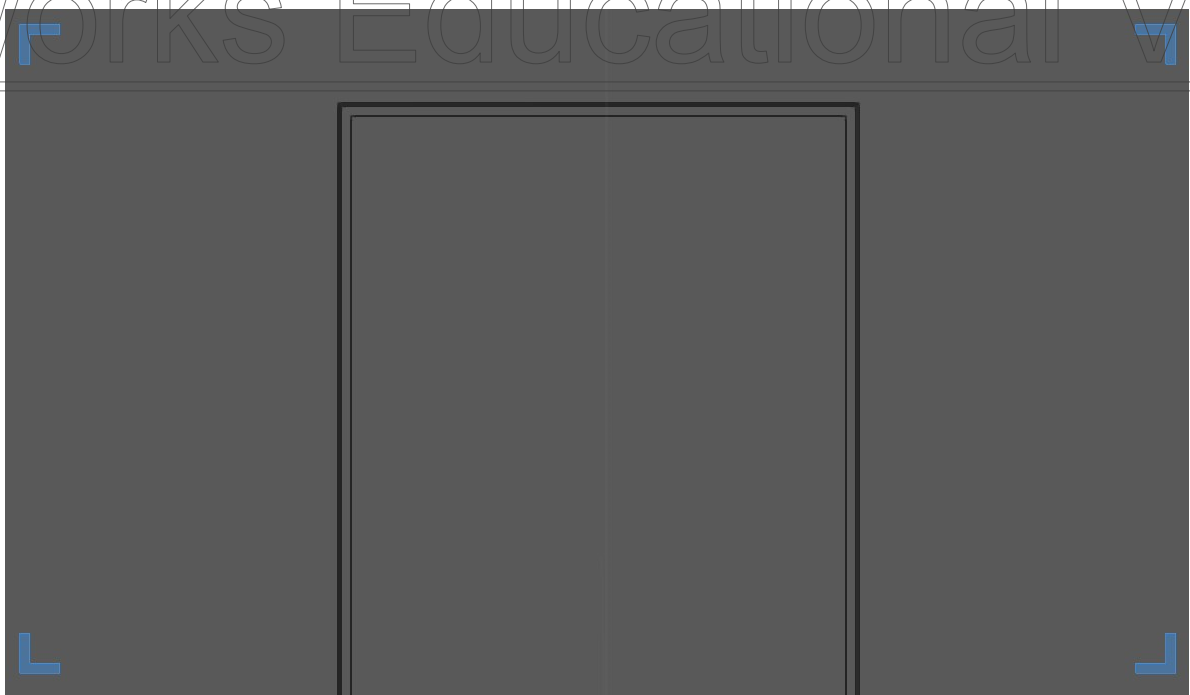
CRACK BOOM

BASE BOOM  
#4

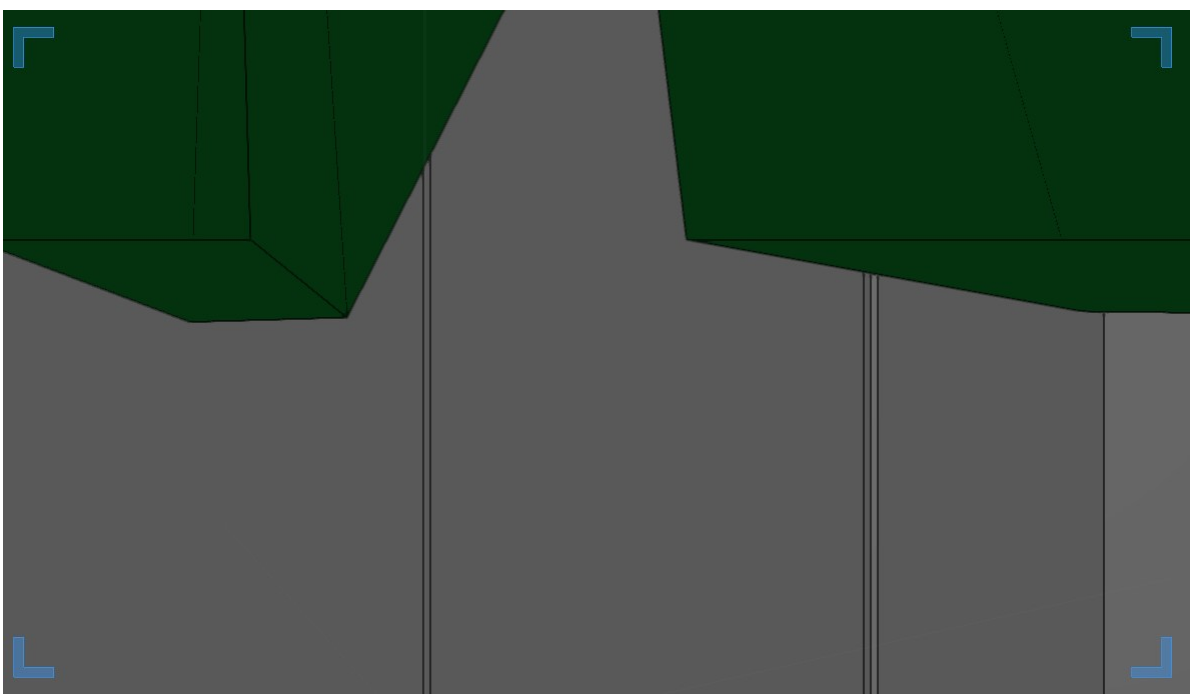
BASE BOOM  
#3

1 PRE-BLAST BOOMS  
Scale: 1/2" = 1'-0"

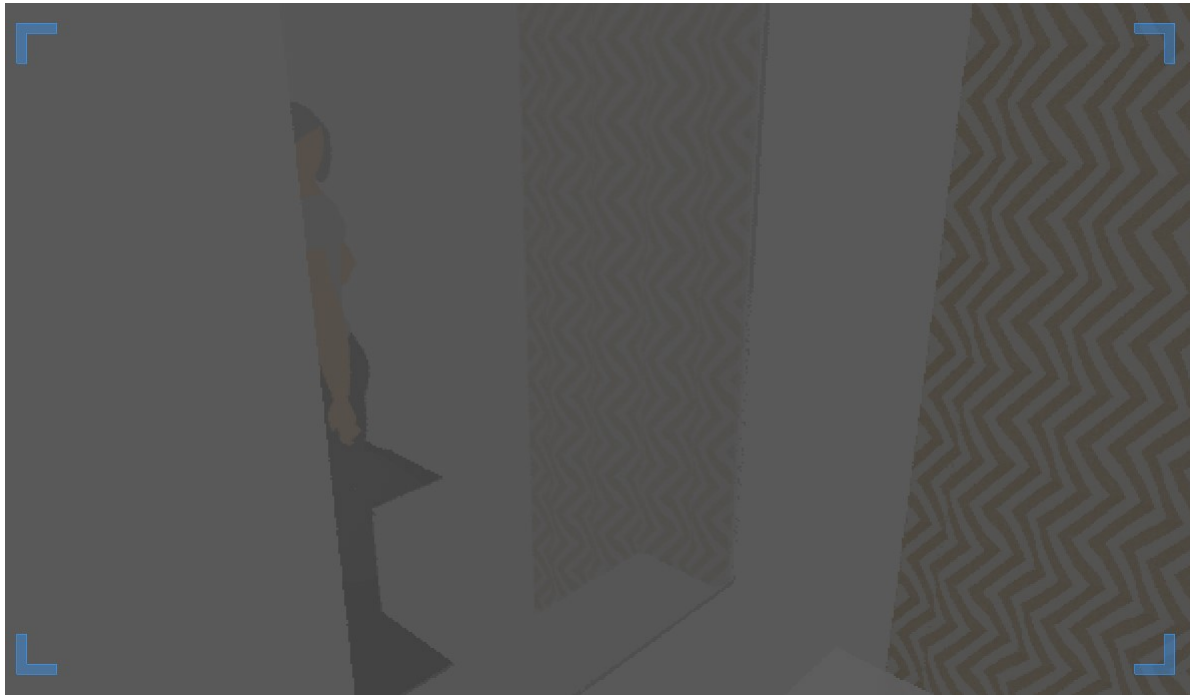
S



HARRY CAMERA



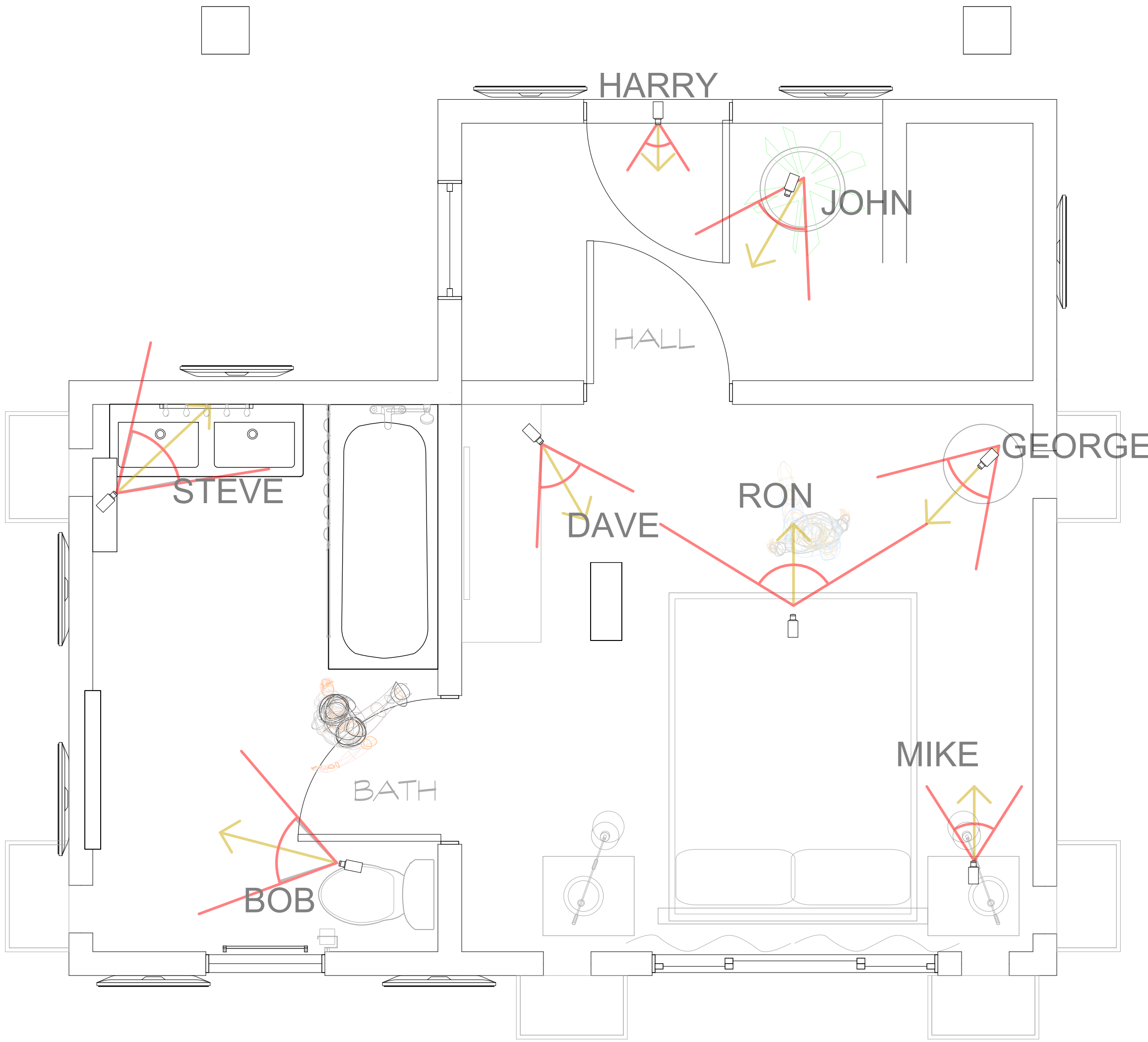
JOHN CAMERA



STEVE CAMERA



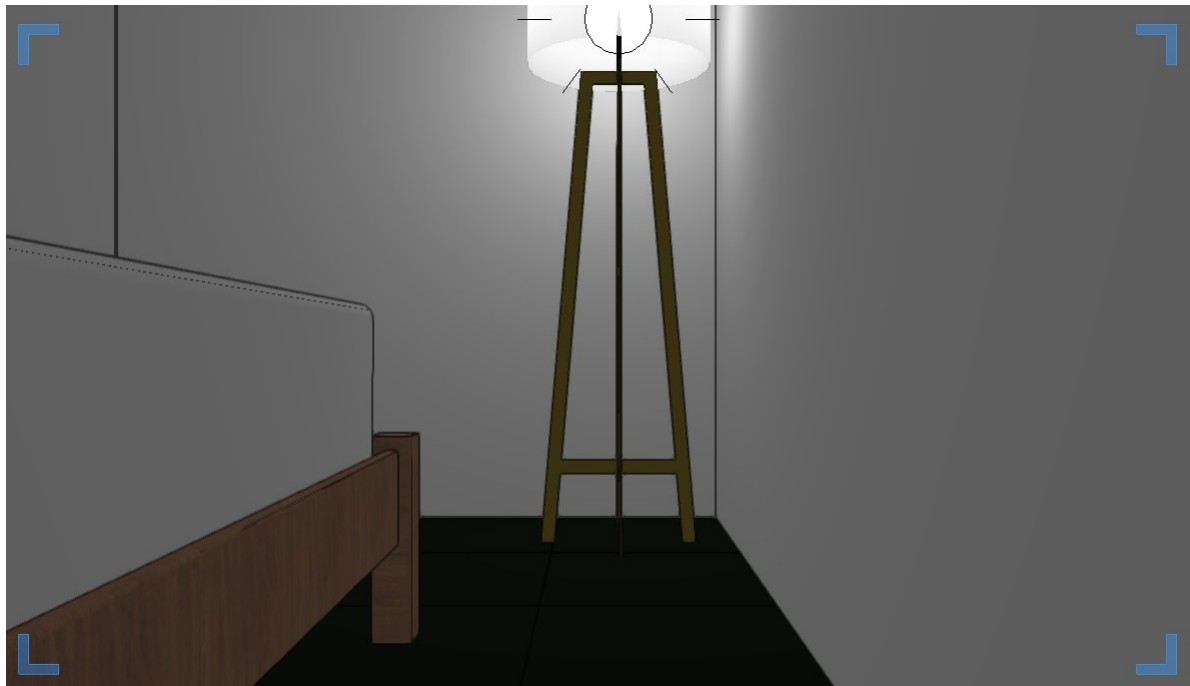
BOB CAMERA



3 PRE-BLAST CAMERA PLOT  
Scale: 1/2" = 1'-0"



GEORGE CAMERA



MIKE CAMERA

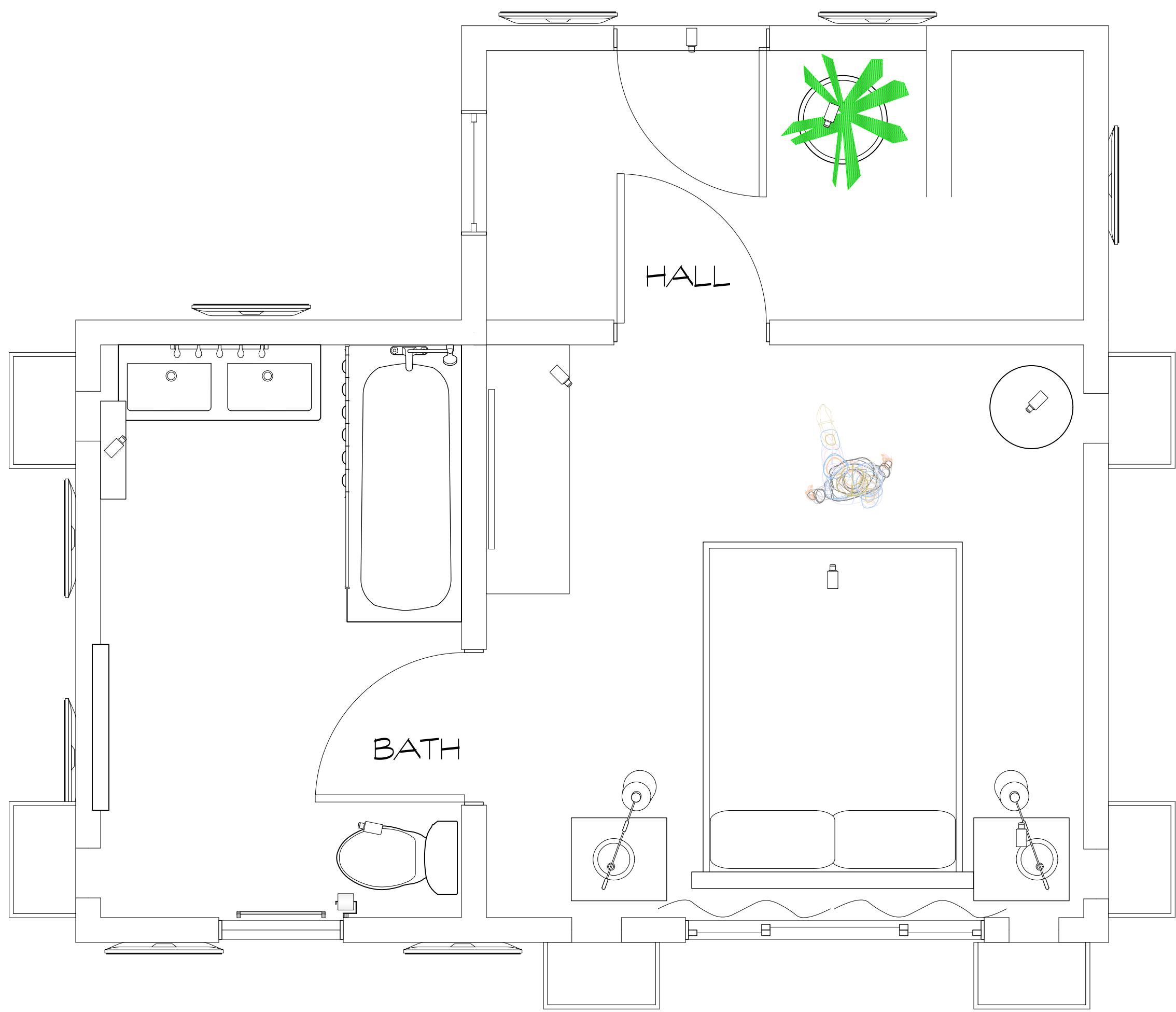


DAVE CAMERA

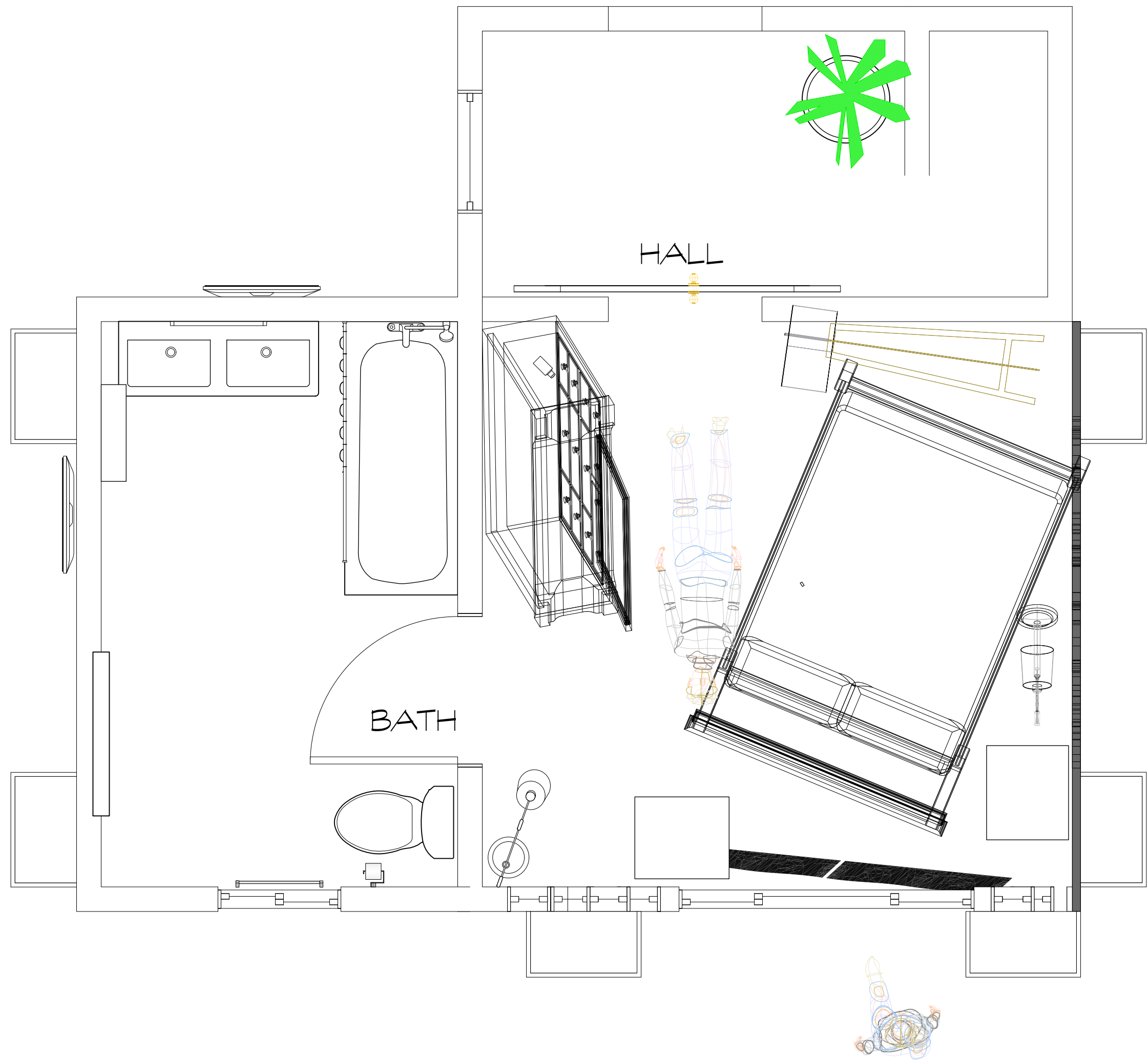


RON CAMERA

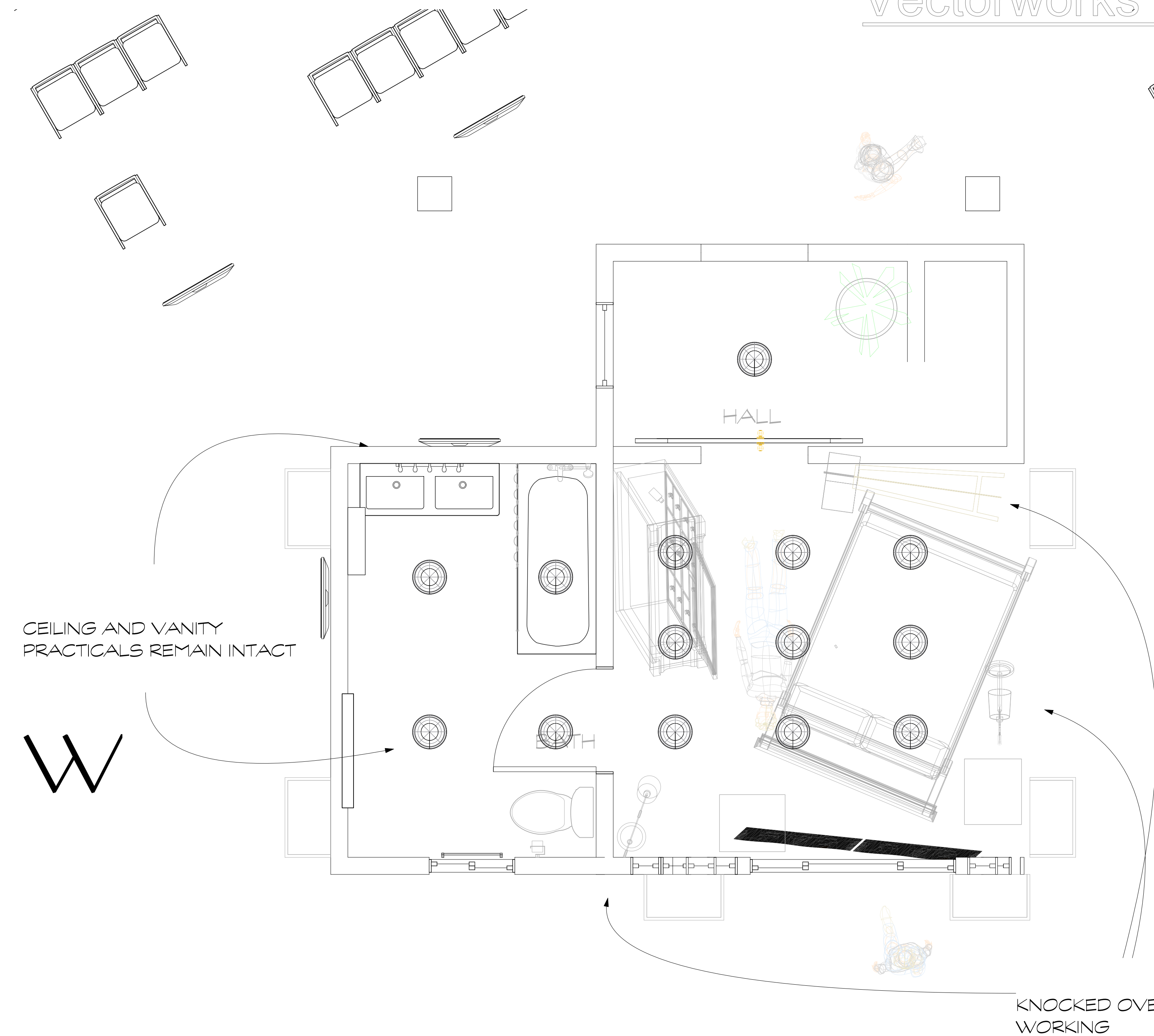




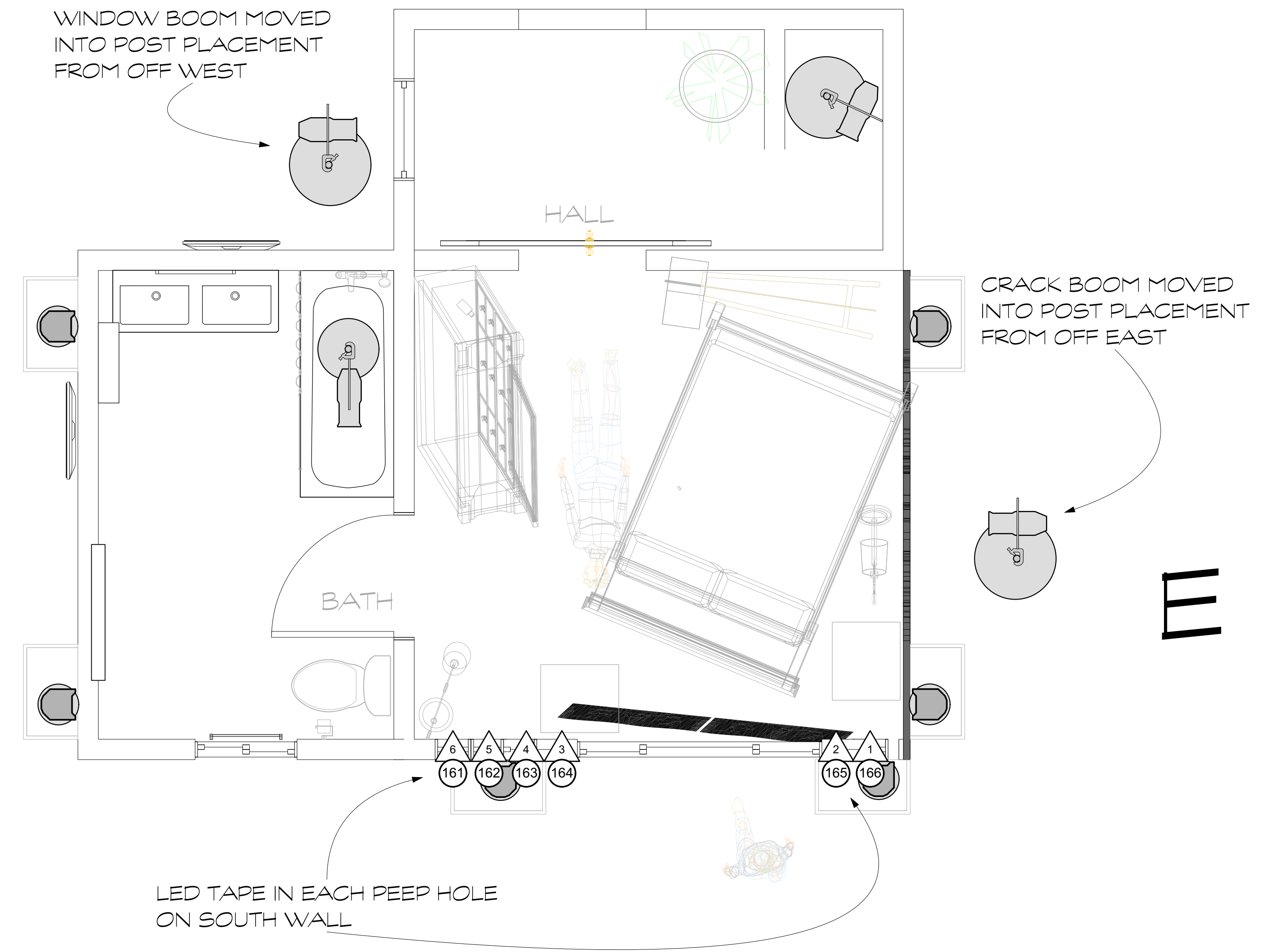
1 PRE  
Scale: 1/2" = 1'-0"



2 POST  
Scale: 1/2" = 1'-0"

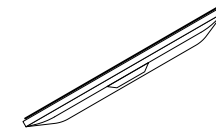
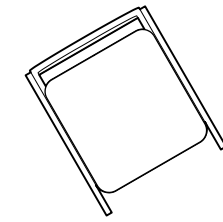
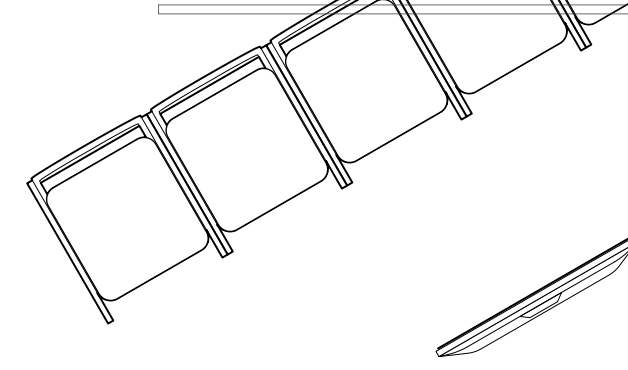
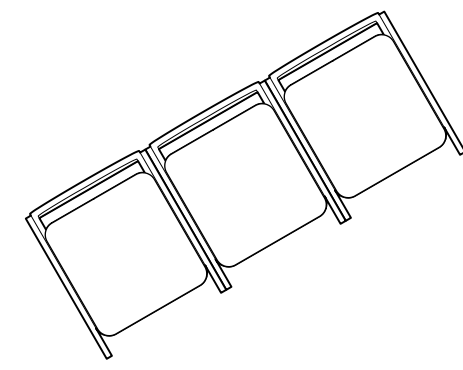


1 POST-BLAST PRACTICALS  
Scale: 1/2" = 1'-0"



2 POST-BLAST BOOMS  
Scale: 1/2" = 1'-0"





NORTH WALL VIEWING  
-TOP HALF OF HALLWAY WALLS  
CRUMBLING AWAY



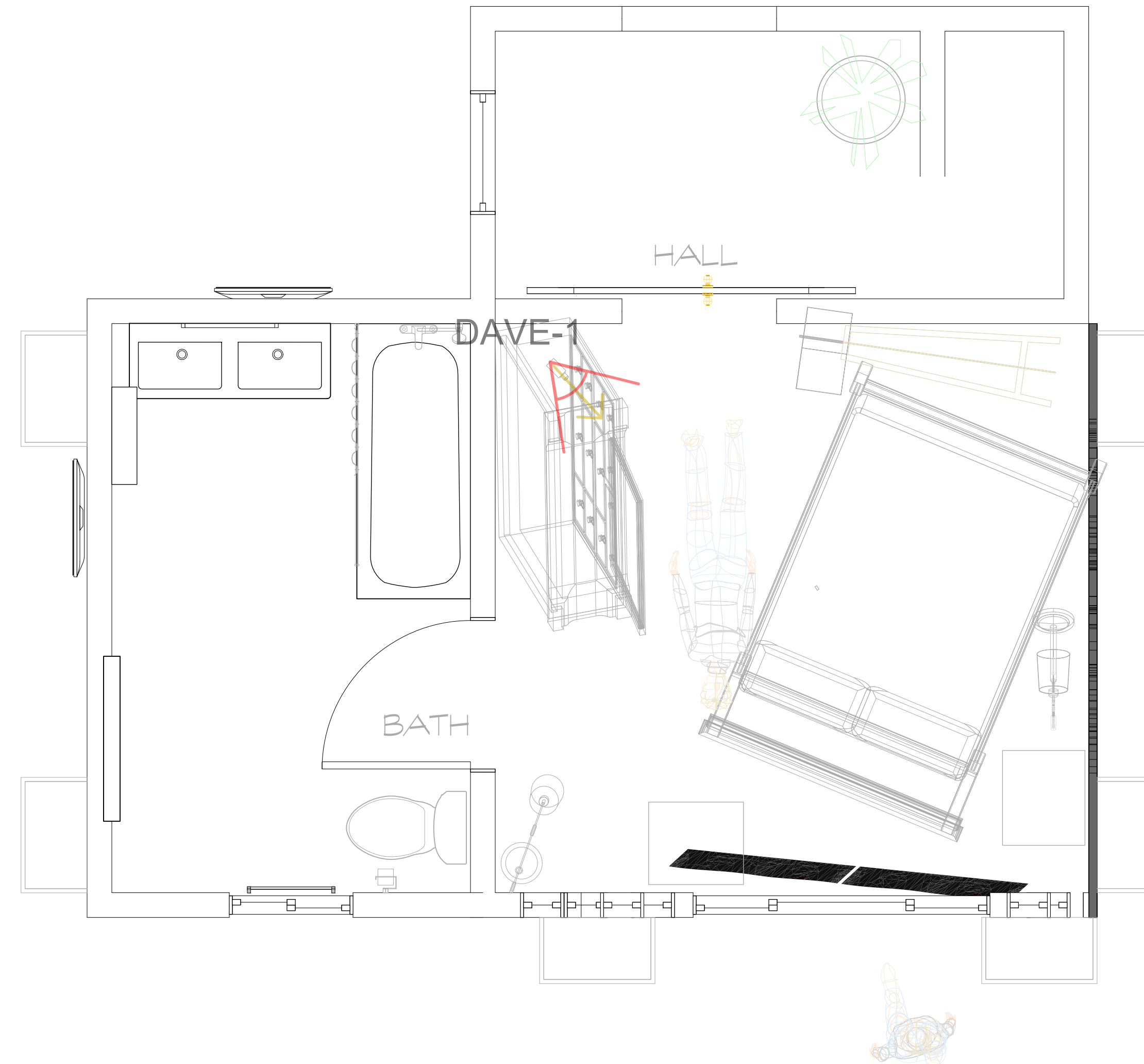
NORTH WALL



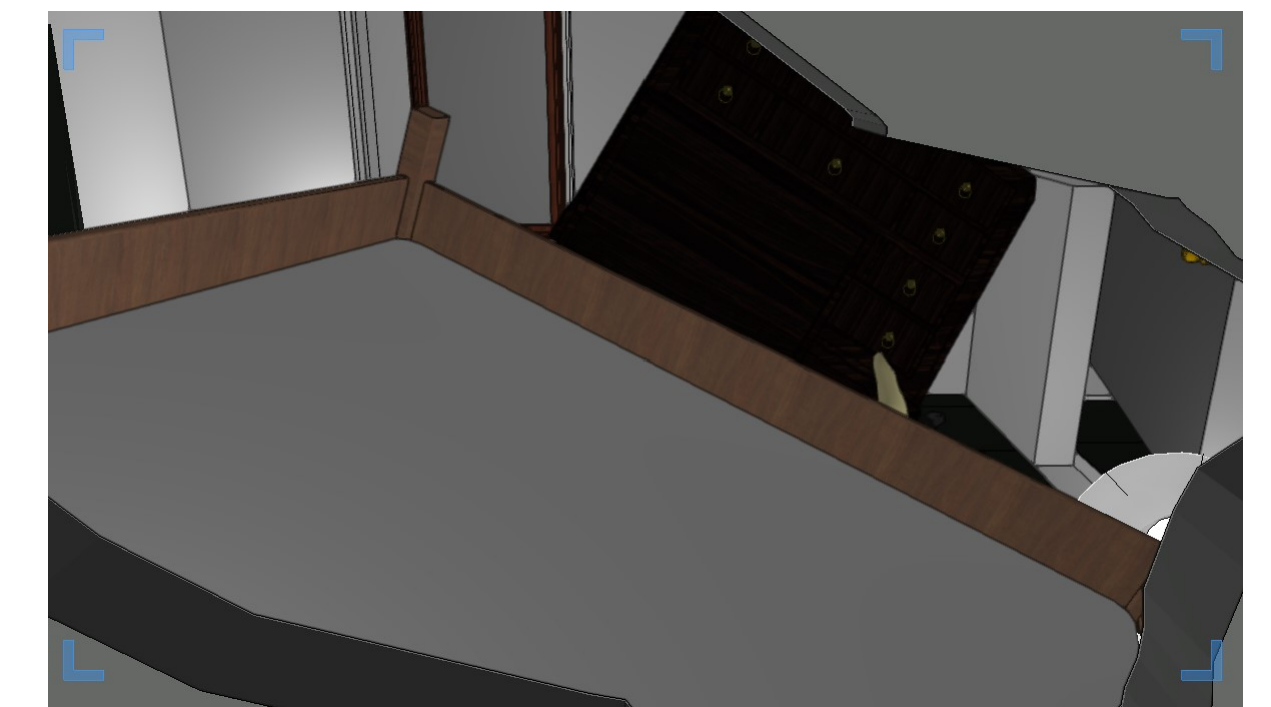
DAVE CAMERA



BATHROOM  
WINDOW



EAST WALL VIEWING  
-FLOOR TO CEILING CRACK

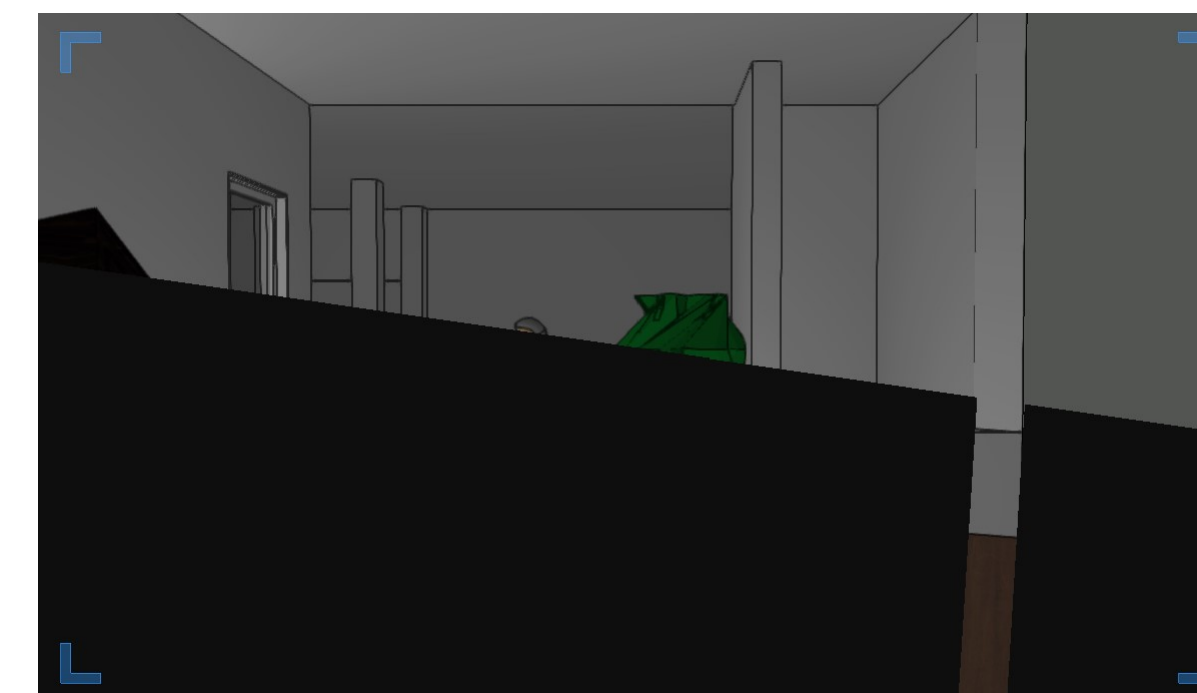


EAST WALL



PEEP HOLE 1  
5'6" OFF GROUND

SOUTH WALL VIEWING  
-PEEP HOLES - X6  
-WINDOW WITH TORN DRAPES  
-FROSTED BATHROOM WINDOW

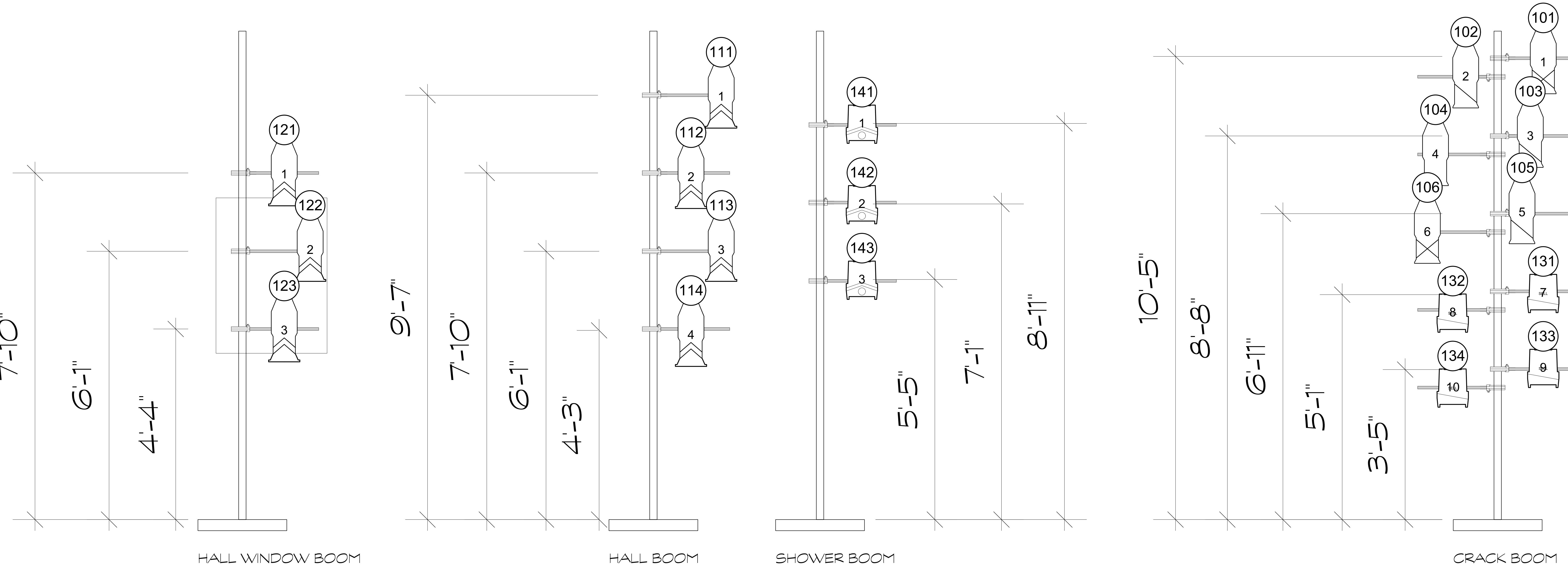


WINDOW WITH  
TORN DRAPES



PEEP HOLE 2  
2'6" OFF GROUND

1 POST-BLAST VIEWING  
Scale: 1/2" = 1'-0"



Light

PRACTICAL

Sidearm 12'

D40 Vivid SEL30

D40 Vivid SEL60

D40 Vivid SEL75

ETC Source-4 19"

ETC Source-4 26"

ETC Source-4 36"

Etc Source 4 70"

6in Light bulb

USITT FL\_6\_2

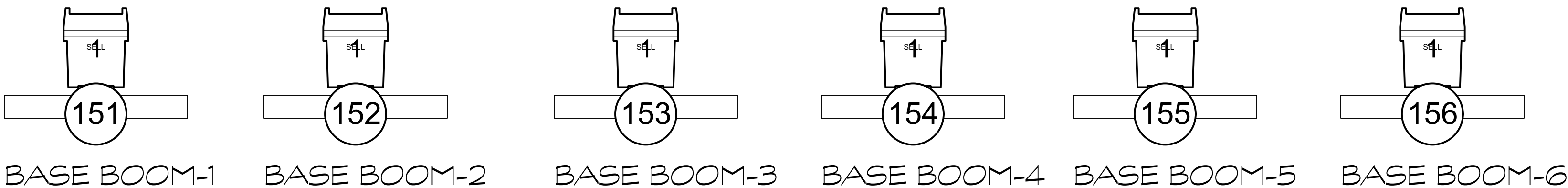
Typical

Unit Number

Channel

1 BOOMS  
Scale: 1" = 1'-0"

NOTE:  
-BOOM DIMENSION TO SIDEARM



2 VENT BOOMS  
Scale: 1" = 1'-0"

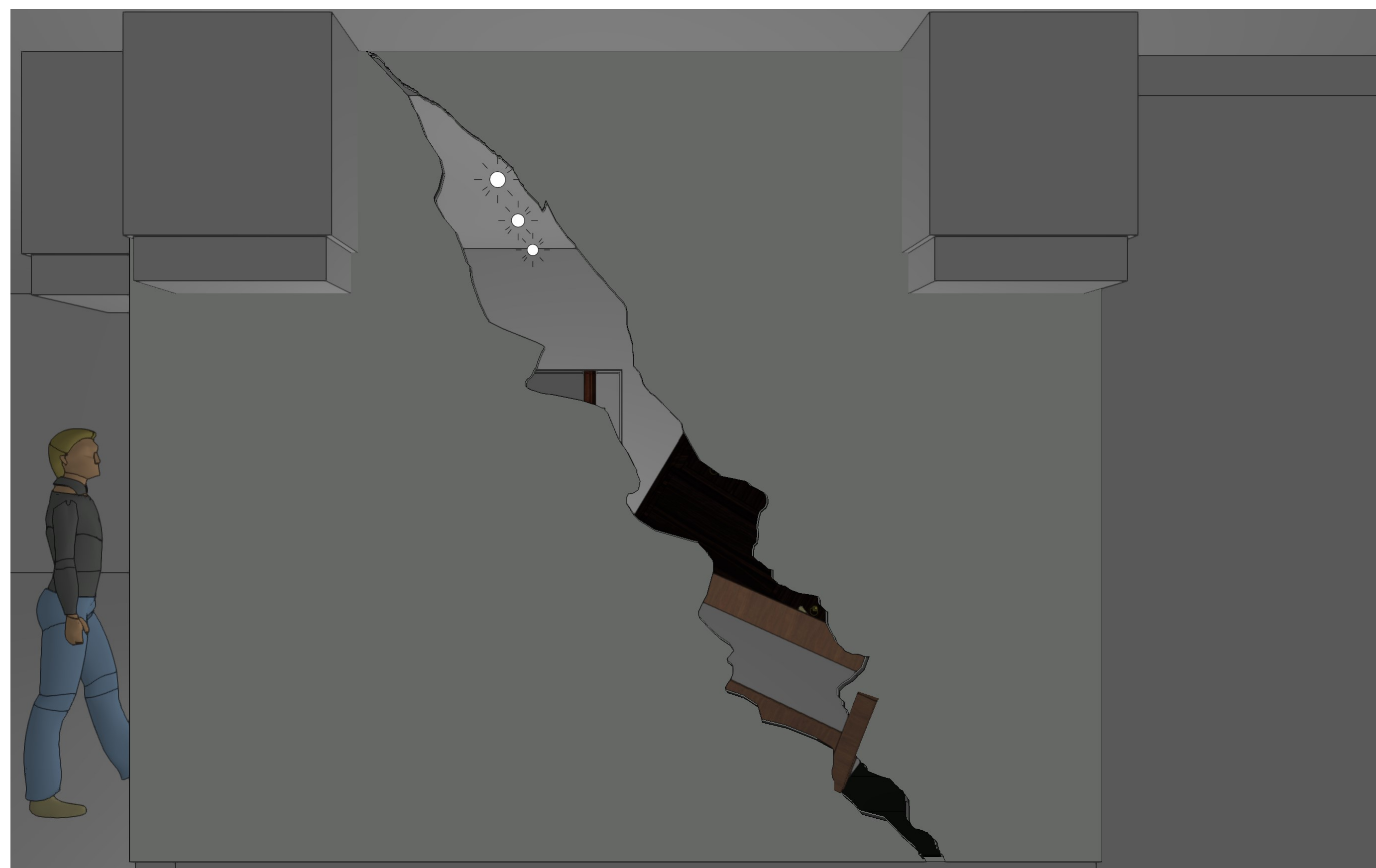




NORTH WALL

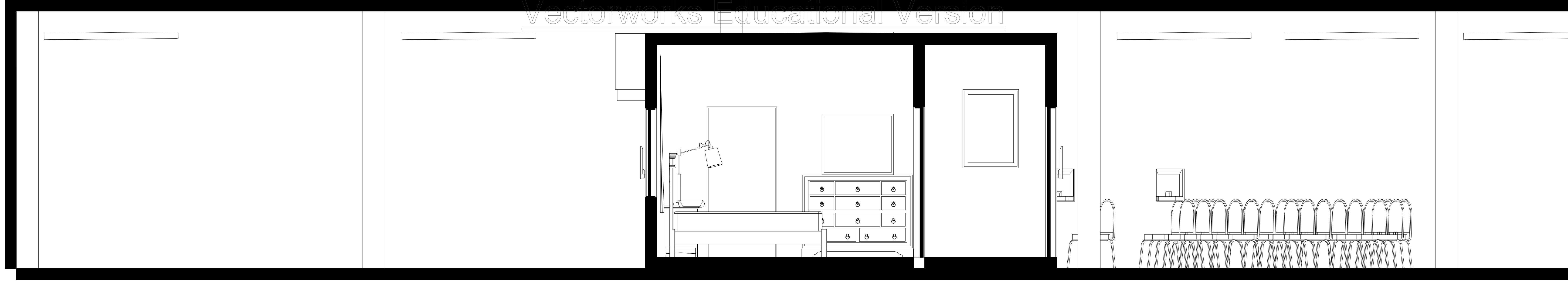


SOUTH WALL



EAST WALL

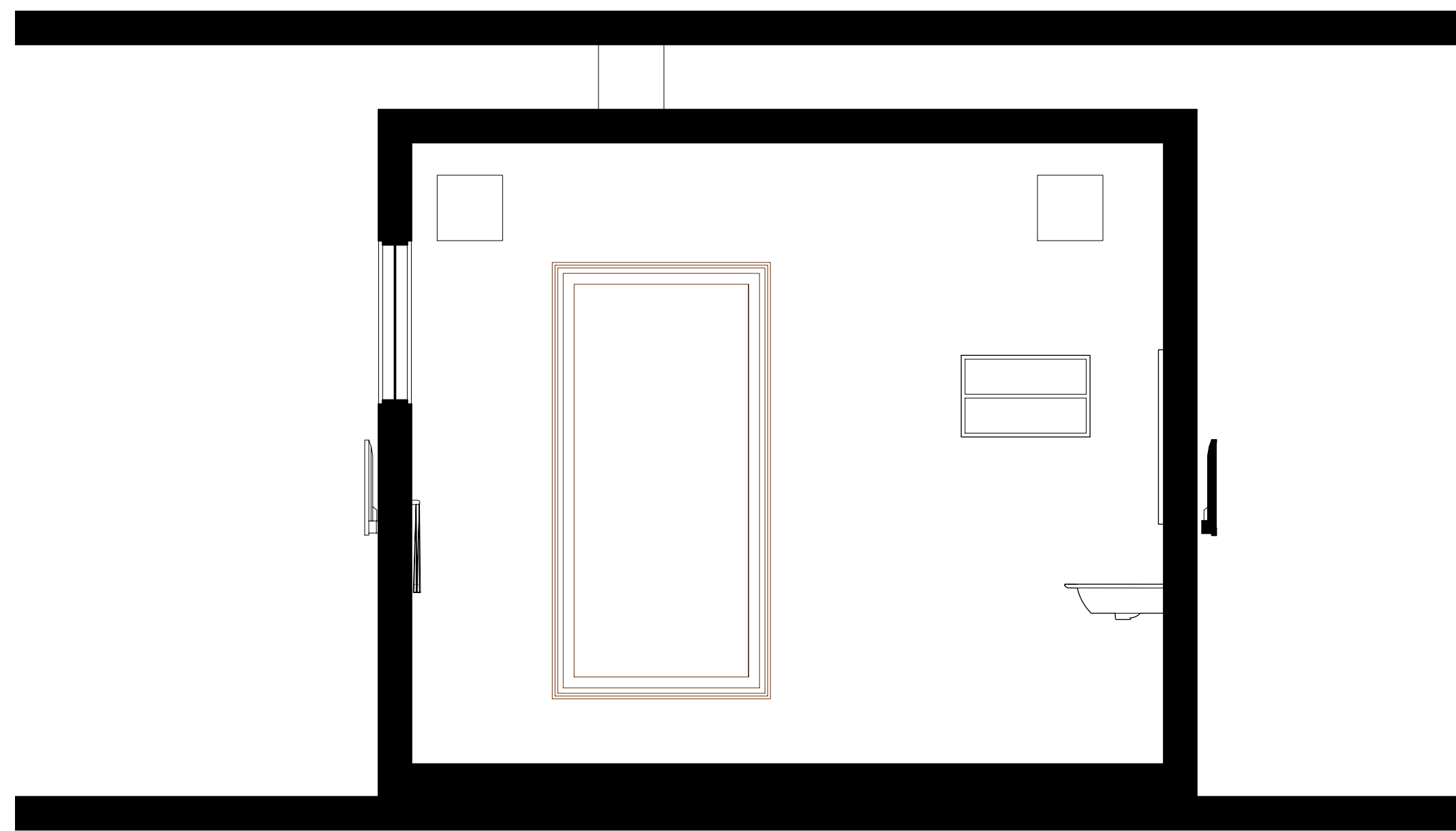
## POST-BLAST VIEWING SPOTS



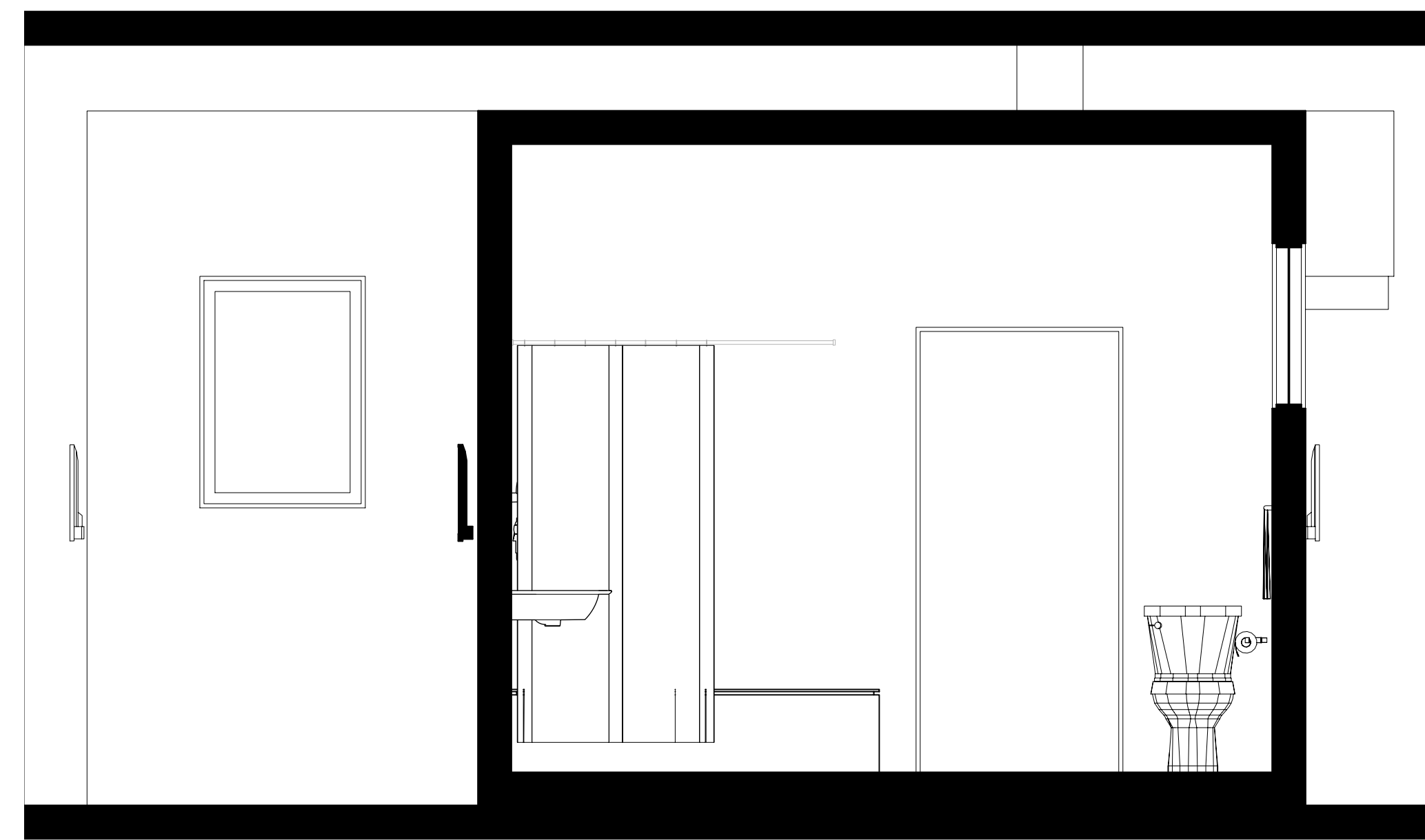
1 SECTION S/N  
Scale: 1/2" = 1'-0"



2 SECTION N/S  
Scale: 1/2" = 1'-0"



3 BATH SECTION S/N  
Scale: 1/2" = 1'-0"

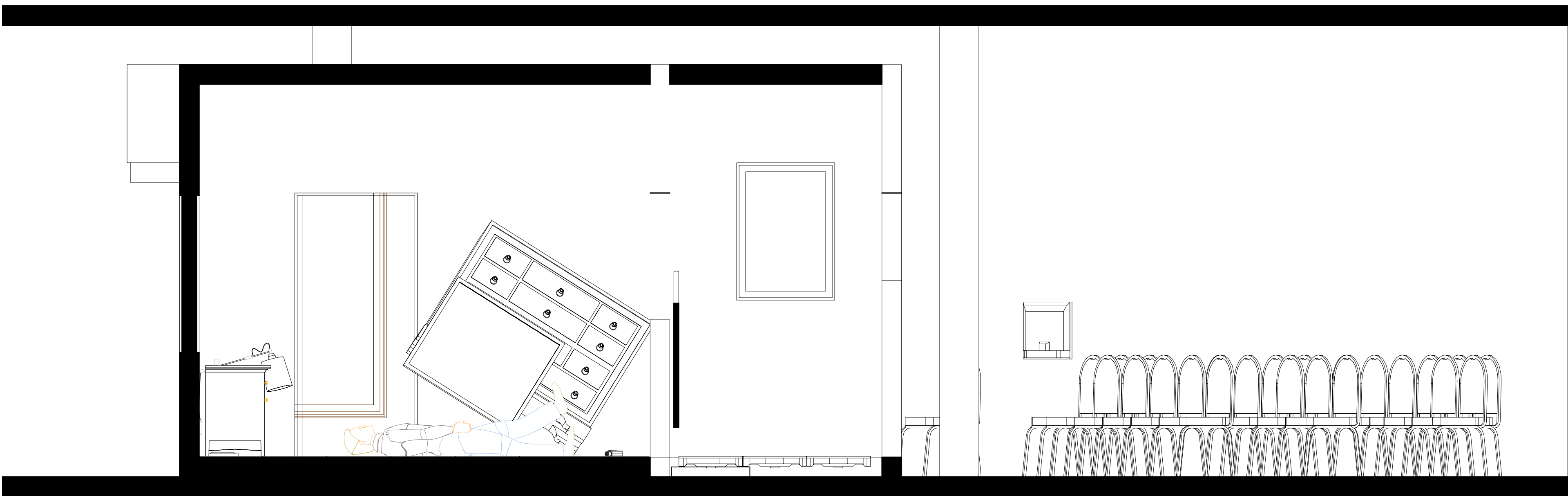


4 BATH SECTION N/S  
Scale: 1/2" = 1'-0"





1 SECTION N/S  
Scale: 1/2" = 1'-0"



2 SECTION S/N  
Scale: 1/2" = 1'-0"